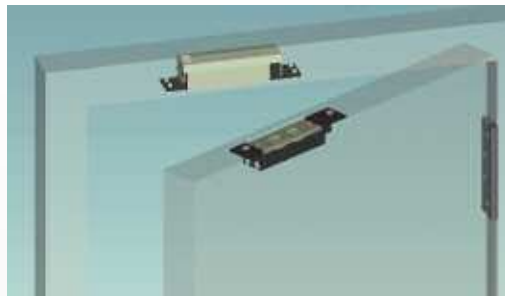


compact shearlock

EMS1200

The Alpro EMS 1200 Compact Shearlock is available in Mortice or Surface Mount models (inc. Glass Mount) and offer slimline dimensions whilst maintaining a holding force in shear of 1200kg. Other benefits include built in PCB controller with switch selectable features and plug in 3 metre flying leads.



High Physical Security

Shear Holding Force 1200kg

Models

Mortice Model

Surface Mount Model

230mm (L) x 51mm (W) x 51mm (D)

Compact Design

Magnet - 163mm (L) x 30mm (W) x 35mm (D)

Armature - 163mm (L) x 30mm (W) x 32mm (D)

Specification

Built in PCB Controller

Switch selectable adjustable time delay 0-30 secs

Misalignment - Multiple auto relock x100

3 metre flying leads

Fully Monitored Hall Effect

Max 24v DC@1 amp

Door Position Switch

Versatile Installation

Single or Double Action Doors

Mortice / Surface / Glass Mount

Multiple Voltage Input

Any voltage from 12v DC -10% to 24v DC +15%.

Complete with built in transient and reverse polarity protection and continuously rated solenoid.

Current Consumption

Volts	Current - Activate	Current - Hold
12v DC	1150mA	290mA
24v DC	1550mA	160mA

Max Armature Pull In

12v DC - 4mm

24v DC - 5mm



Accessories

For use with Surface Mount Housings

Aluminium Glass Mount Bracket suitable for 10-

12mm Glass, 230mm (L) x 30mm (W) x 45mm (D)

Filler Plates, 225mm (L) x 1/2/6mm (W) x 38mm (D)

CE Approved

Cycle Tested

SGS - 500k operations

Patented

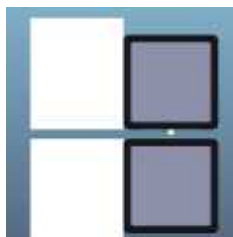
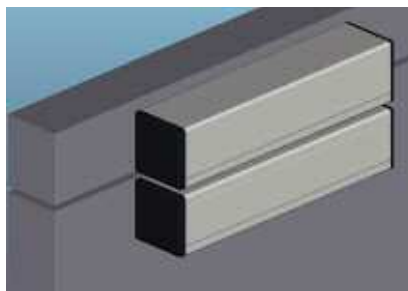
USA / Taiwan / China

Patent applied for

UK

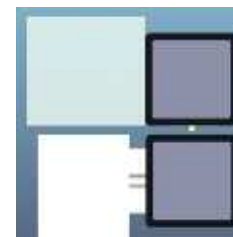
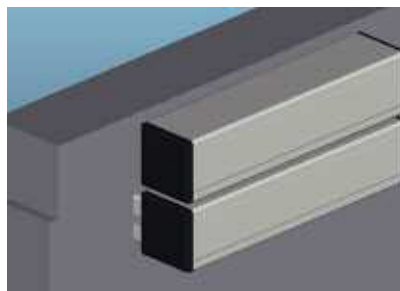
DESCRIPTION	CODE
Mortice Shearlock -12/24v DC Door position Switch - Monitored complete with on board PCB/Plug in 3m flying leads	EMS 1200M
Surface Mount Shearlock as above complete with Surface Mount Housings x2	EMS 1200S
Mortice Shearlock as above complete with Surface Mount Housings x1	EMS 1200MS
Accessories	
Aluminium Frameless Glass (10/12mm) Door Clamp for use with EMS 1200S, One per Surface Mount Housing e.g. 2 required for use with EMS 1200S	
1 required for use with EMS 1200SM	GDC 1200
Aluminium Filler Plate 1mm thick x1	FP 1200 - 1
Aluminium Filler Plate 2mm thick x1	FP 1200 - 2
Aluminium Filler Plate 6mm thick x1	FP 1200 - 6
Regulated PSU/Back Up Battery	
12v 2Amp Power Supply Unit	IECPSU12V2AMP
24v 2Amp Power Supply Unit	IECPSU24V2AMP
7 amp hour battery for PSU back up	IECNP7-12
Regulated PSU required for correct operation	
Independent DPS (Door Position Switch) required for steel door applications	
Suitable positive centring closer required on double action doors	

Metal door to metal frame - flush



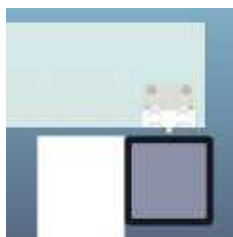
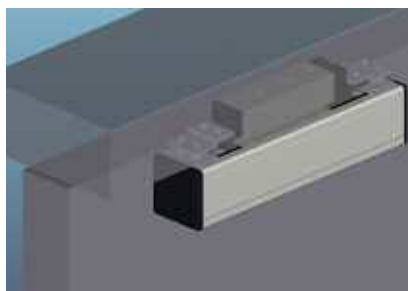
Side View

Metal door to metal frame - offset



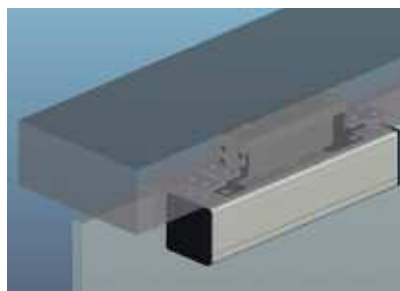
Side View

Metal door to metal frame



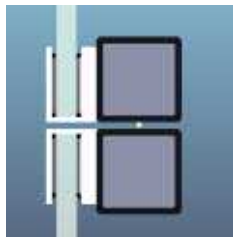
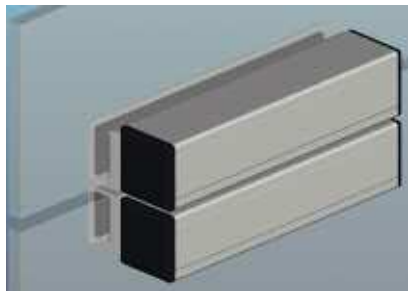
Side View

Frameless glass door to metal frame, Armature surface.



Side View

Frameless glass door to glass



Side View

SM 1200



GDC 1200



FP 1200-1/2/6

